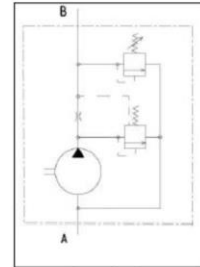




Catalogue of double gear hydroelectric generator

Catalogue of gear hydroelectric generator

HP KA 16 RL 11, HP KA 16 RL 12



see schedule
10 MPa

Technical conditions:

Pressure on outlet of hydroel. generator: - nominal
- maximum * (apply for HPKA16RL11, HPKA16RL12)

* stated maximum pressure is only pressure peak of hydraulic circuit and it is not possible to consider this peak like working pressure. Maximum time allowed for this overpressure are 3 seconds.

Surroundings temperature

-30 to +60°C

Liquid temperature

-30 to +80°C

Liquid - mineral oil for hydrostatic drives f.e.:

MOGUL OLN 22 TO 46

Shell Tellus 32

Shell Tellus 46

Madit OHHM 46

Operating range of hydraulic oil kinematic viscosity during 40°C

20 - 60 mm² s⁻¹

Maximum kinematic viscosity (during start up)

1200 . mm² s⁻¹

Filtration efficiency of filter insert

10 - 25 µm

β₂₅ 75

Working position

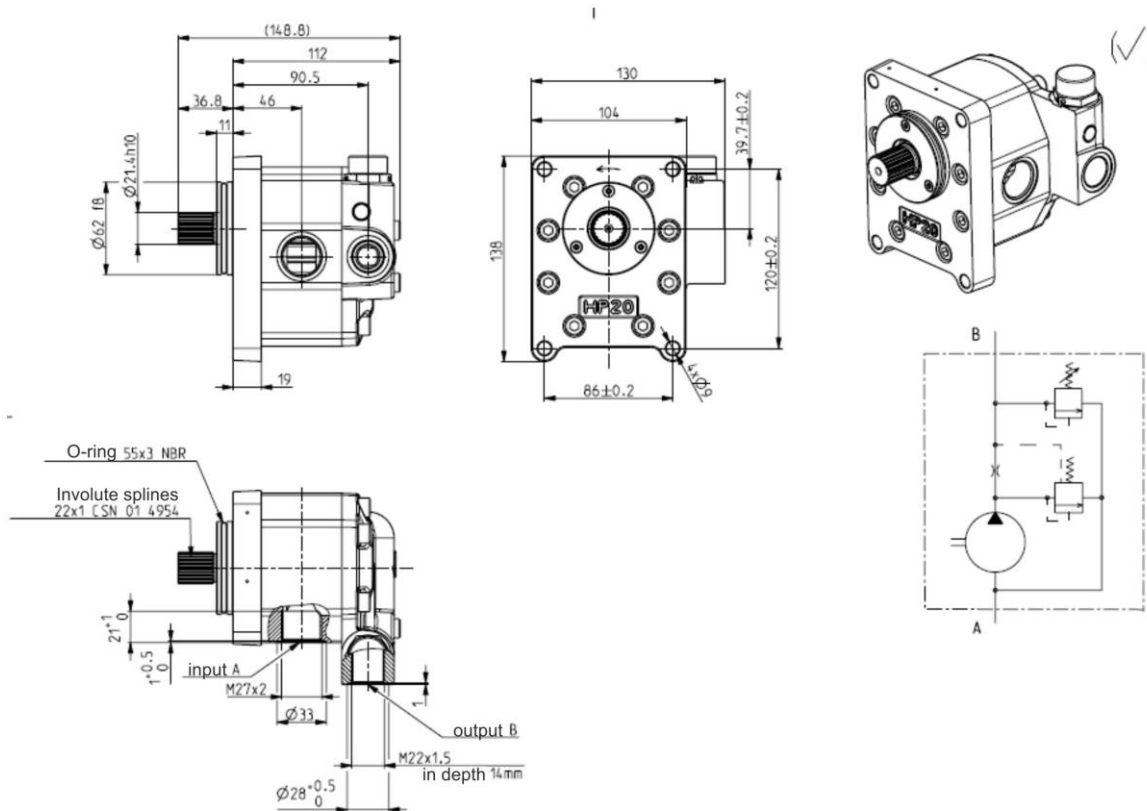
arbitrary

Technical specifications

Signification of gear hydroelectric generator	Nominal geometric capacity** cm ³ / rot.	Rotations 1/min			Nominal pressure gradient Δp MPa	During nominal rotations and nominal pressure	
		Min. *	Max. *	Nominal		input kW	overflow dm ³ /min
HP KA16RL 11	16	600	3000	1500	8	6,5.....12,5	
HP KA16RL 12	16	600	3000	1500	6,3	6,5.....12,5	

* Permanent operation is allowed only in rotations range from 600 to 3 000 min⁻¹.

MARTING s.r.o. (Ltd.), NÁBREŽNÁ 2, SK - 038 61 VRÚTKY, SLOVAKIA
 tel.: ++421 43 4281 707-9, fax: ++421 43 4281 706, www.marting.sk
 E-mail: marting@marting.sk



MARTING s.r.o. (Ltd.), NÁBREŽNÁ 2, SK - 038 61 VRÚTKY, SLOVAKIA
 tel.: ++421 43 4281 707-9, fax: ++421 43 4281 706, www.marting.sk
 E-mail: marting@marting.sk